

Table of Contents

Table of Contents

Prison Population

Prison Composition

Prison Admission Composition

Parole Population

Parole - Earned Discharge Credits

Probation Population

Probation - Earned Discharge Credits

Presumptive Probation

Probation - HOPE Pilot

Probation Sanctions

Drug and DUI Courts

Ingestion Law

Preliminary Hearings

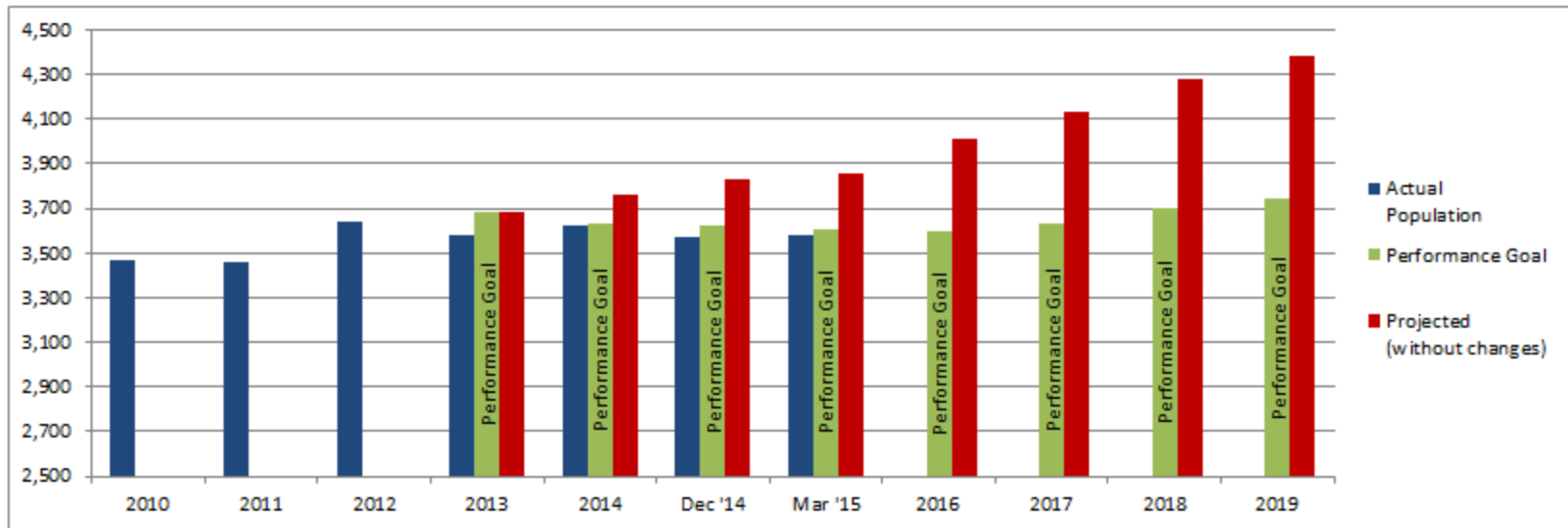
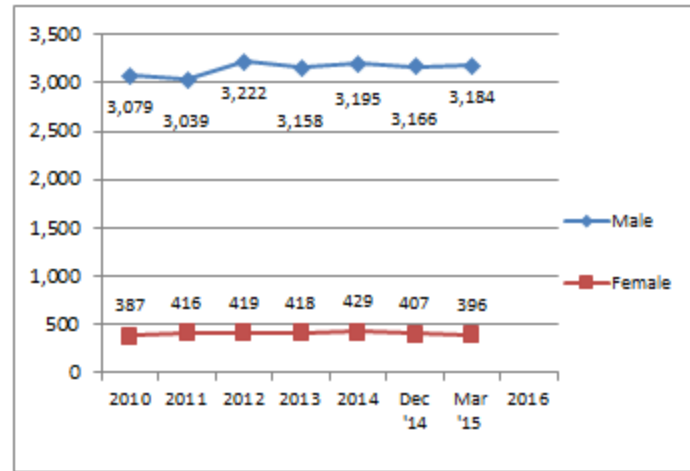
Substance Abuse

EPICS Training, Tribal Pilot, Rural Substance Abuse, and Community Housing Alternatives

Veterans Information

Prison Population

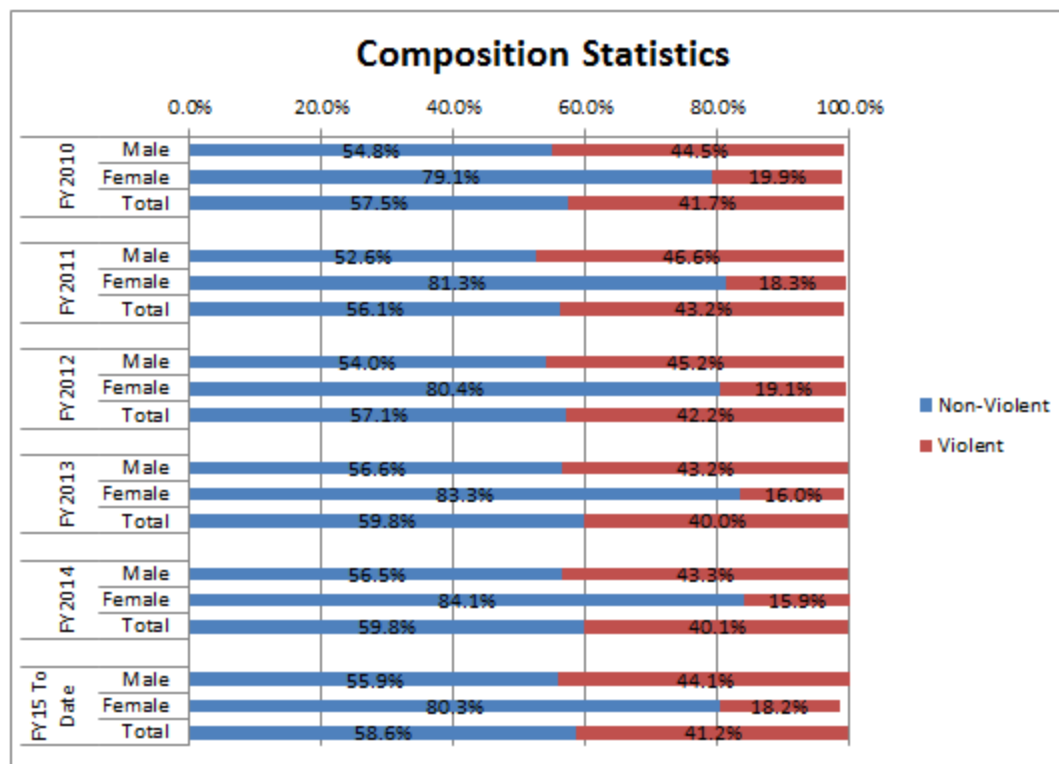
Date(FY)	Total Population		Actual Population	Performance Goal	Projected (without changes)
	Male	Female			
2010	3,079	387	3,466		
2011	3,039	416	3,455		
2012	3,222	419	3,641		
2013	3,158	418	3,576	3,686	3,686
2014	3,195	429	3,624	3,636	3,760
Dec '14	3,166	407	3,573	3,624	3,833
Mar '15	3,184	396	3,580	3,607	3,853
2016				3,601	4,013
2017				3,628	4,136
2018				3,704	4,282
2019				3,745	4,382



PSIA Goal: Reduce corrections spending by focusing prison space on violent, chronic, and career criminals.
Performance Goal: Shown in green on the above chart.

Prison Composition

		Violent	Non-Violent
FY2010	Male	44.5%	54.8%
	Female	19.9%	79.1%
	Total	41.7%	57.5%
FY2011	Male	46.6%	52.6%
	Female	18.3%	81.3%
	Total	43.2%	56.1%
FY2012	Male	45.2%	54.0%
	Female	19.1%	80.4%
	Total	42.2%	57.1%
FY2013	Male	43.2%	56.6%
	Female	16.0%	83.3%
	Total	40.0%	59.8%
FY2014	Male	43.3%	56.5%
	Female	15.9%	84.1%
	Total	40.1%	59.8%
FY15 To Date	Male	44.1%	55.9%
	Female	18.2%	80.3%
	Total	41.2%	58.6%

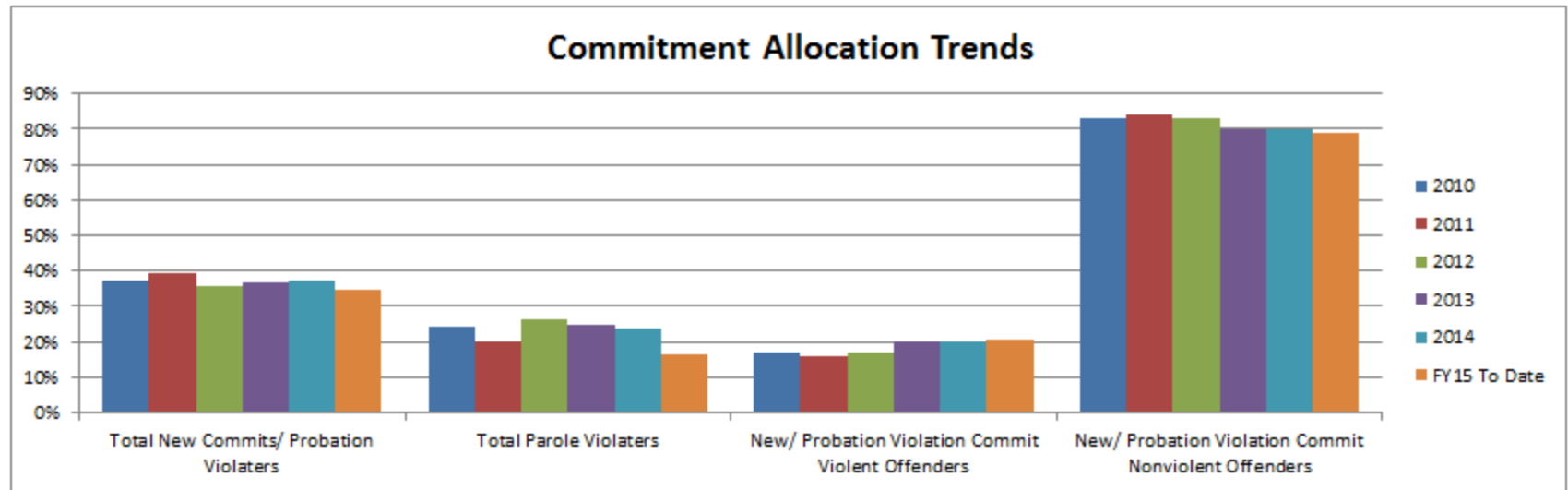


PSIA Goal: Reduce corrections spending by focusing prison space on violent, chronic, and career criminals.

Prison Admission Composition

Date (FY)	Male New Commits/ Probation Violaters	Male Parole Violaters	Female New Commits/ Probation Violaters	Female Parole Violaters	Total New Commits/ Probation Violaters	Total Parole Violaters	New/ Probation Violation Commit Violent Offenders	New/ Probation Violation Commit Nonviolent Offenders
2010	35%	24%	53%	26%	37%	24%	17%	83%
2011	37%	20%	57%	19%	39%	20%	16%	84%
2012	33%	26%	54%	28%	36%	26%	17%	83%
2013	35%	24%	47%	32%	37%	25%	20%	80%
2014	36%	23%	47%	28%	38%	24%	20%	80%
FY15 To Date	34%	15%	40%	20%	35%	16%	21%	79%

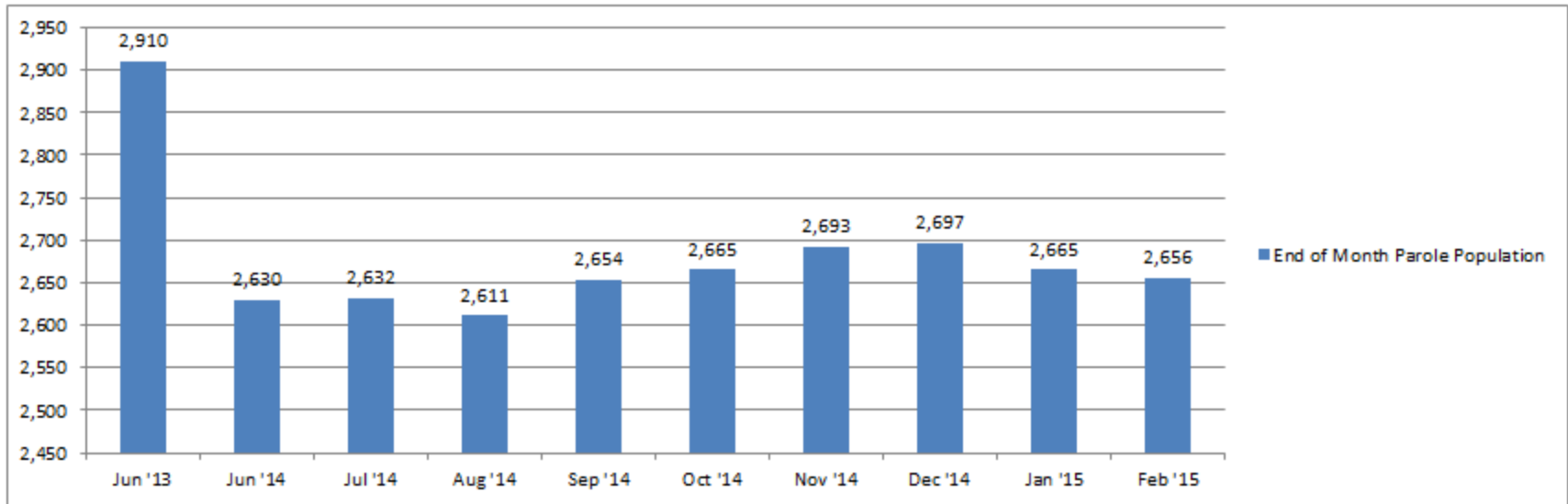
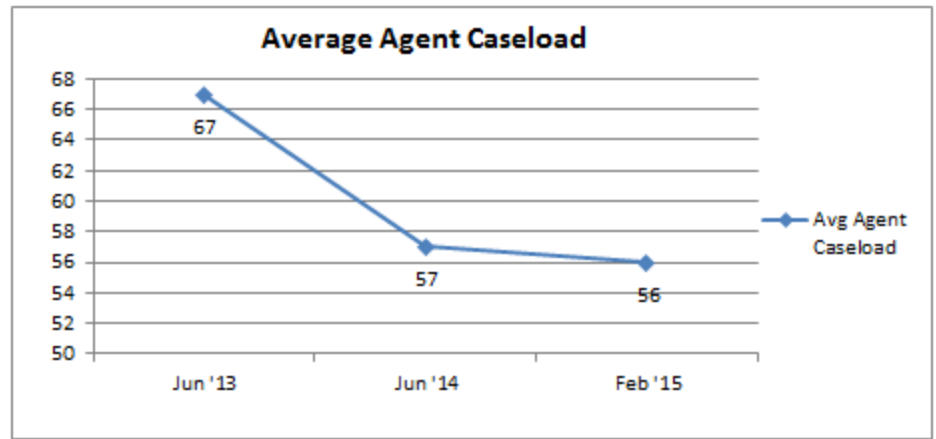
Commitment Allocation Trends



PSIA Goal: Reduce corrections spending by focusing prison space on violent, chronic, and career criminals.

Parole Population

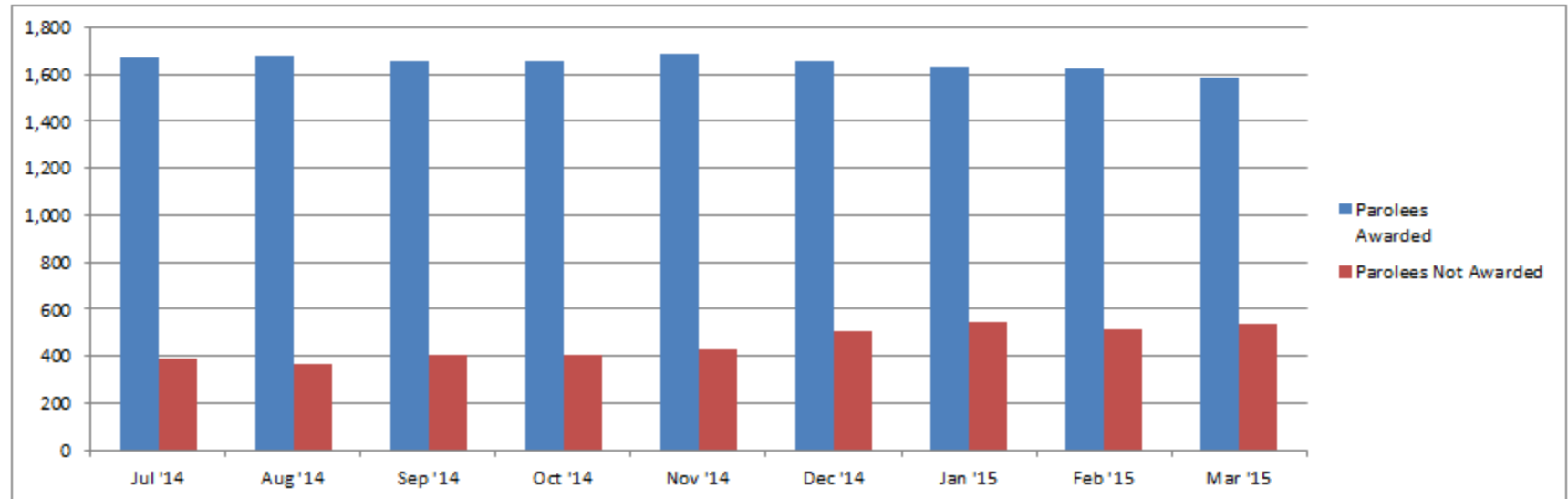
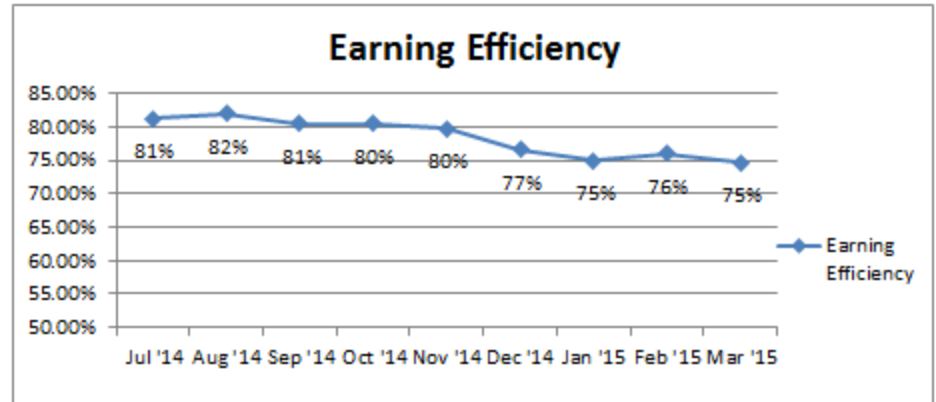
Parole Population			
Date(FY)	Parolees		Avg Agent Caseload
Jun '13	2,910	Baseline	Jun '13 67
Jun '14	2,630		Jun '14 57
Jul '14	2,632		Feb '15 56
Aug '14	2,611		
Sep '14	2,654		
Oct '14	2,665		
Nov '14	2,693		
Dec '14	2,697		
Jan '15	2,665		
Feb '15	2,656		



PSIA Goal: Hold offenders more accountable by strengthening community supervision

Earned Discharge Credits(Parole)

Date Range(FY)	Total Population			Earning Efficiency
	Eligible Parolees	Parolees Awarded	Parolees Not Awarded	
Jul '14	2,058	1,670	388	81.15%
Aug '14	2,046	1,678	368	82.01%
Sep '14	2,062	1,660	402	80.50%
Oct '14	2,063	1,660	403	80.47%
Nov '14	2,115	1,687	428	79.76%
Dec '14	2,165	1,658	507	76.58%
Jan '15	2,183	1,635	548	74.90%
Feb '15	2,140	1,627	513	76.03%
Mar '15	2,126	1,586	540	74.60%

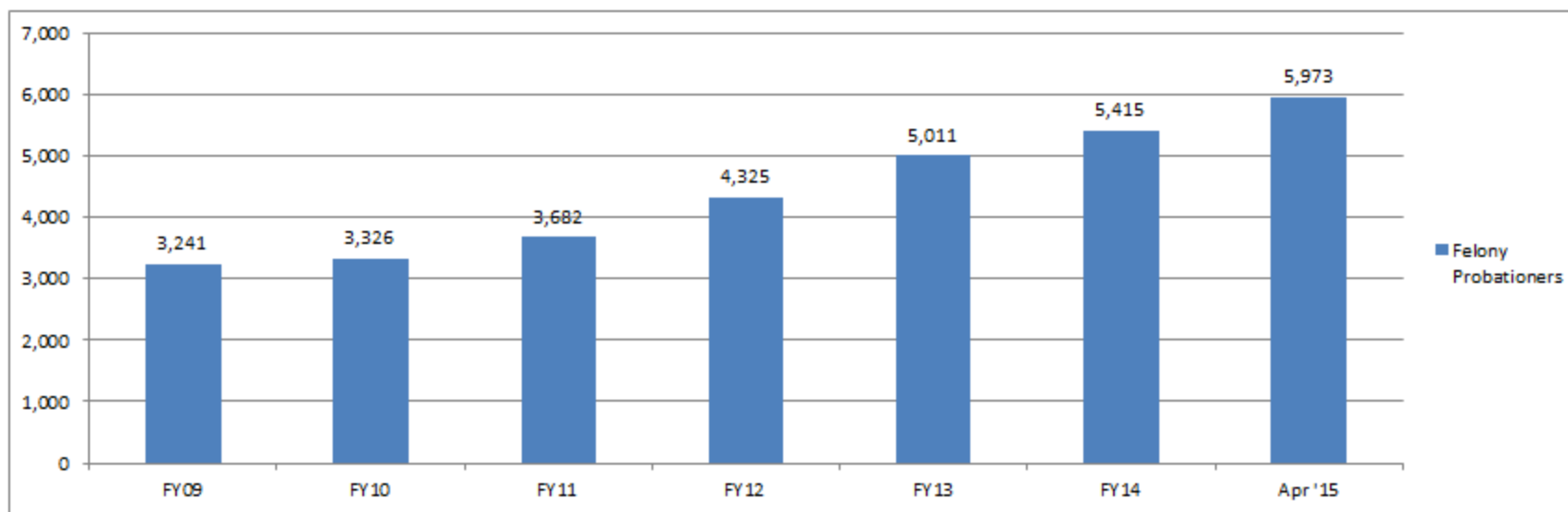
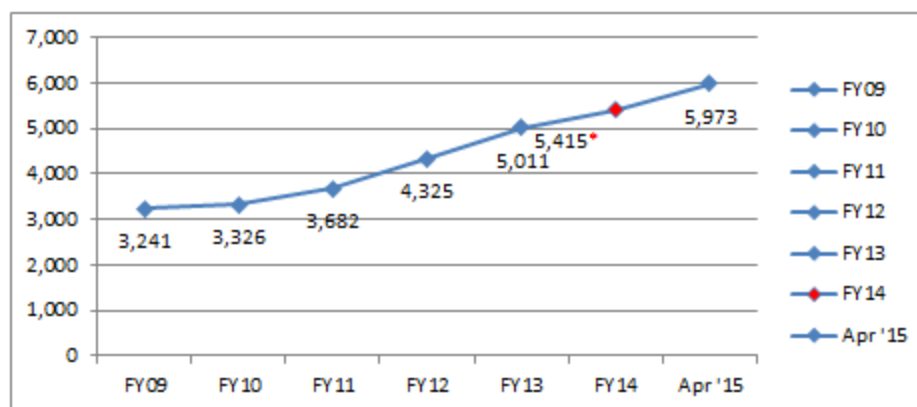


PSIA Goal: Reduce corrections spending and focus prison space on violent, chronic, and career criminals.

PSIA Goal: Hold offenders more accountable by strengthening community supervision

Probation Population

Total Population	
End of Year Date	Felony Probationers
FY09	3,241
FY10	3,326
FY11	3,682
FY12	4,325
FY13	5,011
FY14	5,415
Apr '15	5,973

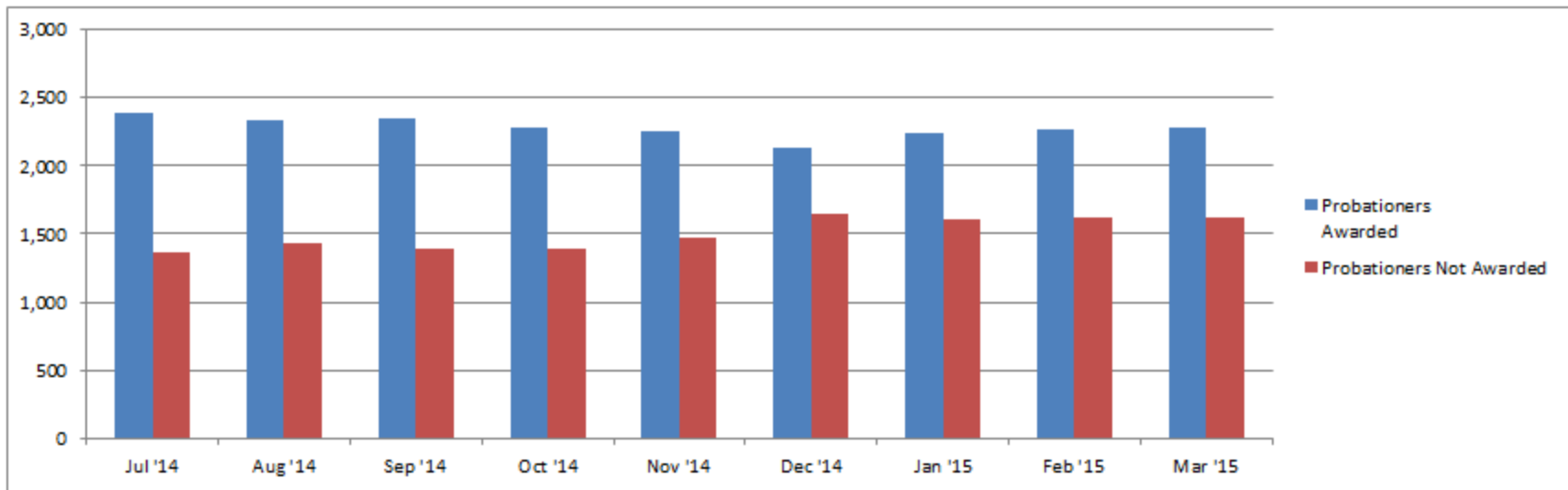
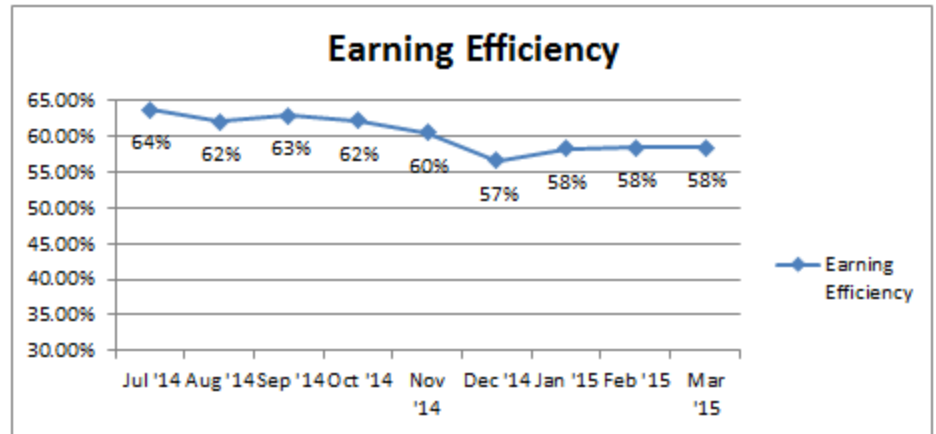


PSIA Goal: Hold offenders more accountable by strengthening community supervision

* PSIA became effective July 1, 2014.

Earned Discharge Credits(Probation)

Date Range(FY)	Total Population			Earning Efficiency
	Eligible Probationers	Probationers Awarded	Probationers Not Awarded	
Jul '14	3,751	2,392	1,359	63.77%
Aug '14	3,768	2,337	1,431	62.02%
Sep '14	3,737	2,348	1,389	62.83%
Oct '14	3,669	2,283	1,386	62.22%
Nov '14	3,728	2,255	1,473	60.49%
Dec '14	3,780	2,139	1,641	56.59%
Jan '15	3,838	2,235	1,603	58.23%
Feb '15	3,883	2,266	1,617	58.36%
Mar '15	3,904	2,278	1,626	58.35%



PSIA Goal: Focus supervision on high-risk offenders.

PSIA Goal: Hold offenders more accountable by strengthening community supervision

Earning Efficiency - The quotient of individuals who earned a credit over the total qualified individuals.

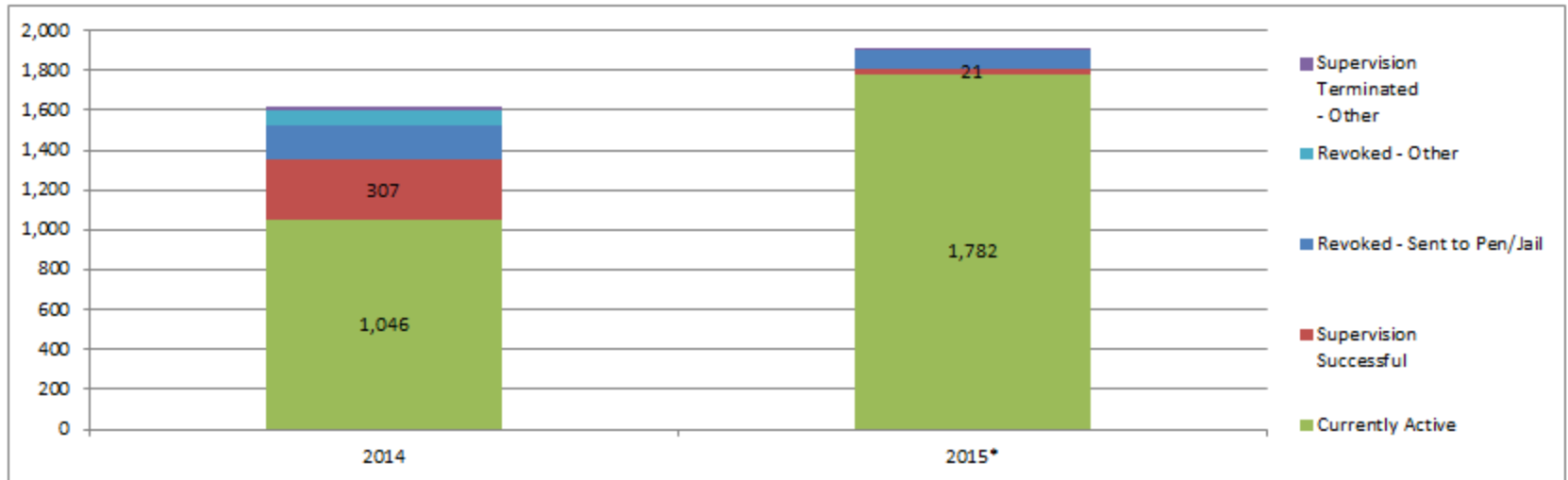
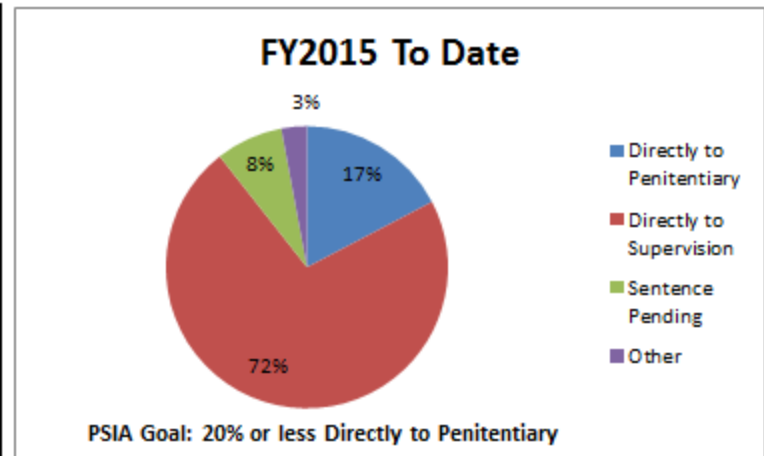
This is an important metric in measuring how effective this program is at generating participation.

Presumptive Probation

Fiscal Year of Admission	Class 5/6 Felony Population			
	Directly to Penitentiary	Directly to Supervision	Sentence Pending	Other
2014	509	1,615	34	60
2015*	458	1,904	203	77

Fiscal Year of Admission	Currently Active	Supervision Successful	Supervision Terminated - Other	Revoked - Sent to Pen/Jail	Revoked - Other
2014	1,046	307	20	167	75
2015*	1,782	21	5	95	1

This dataset does not represent final outcomes.



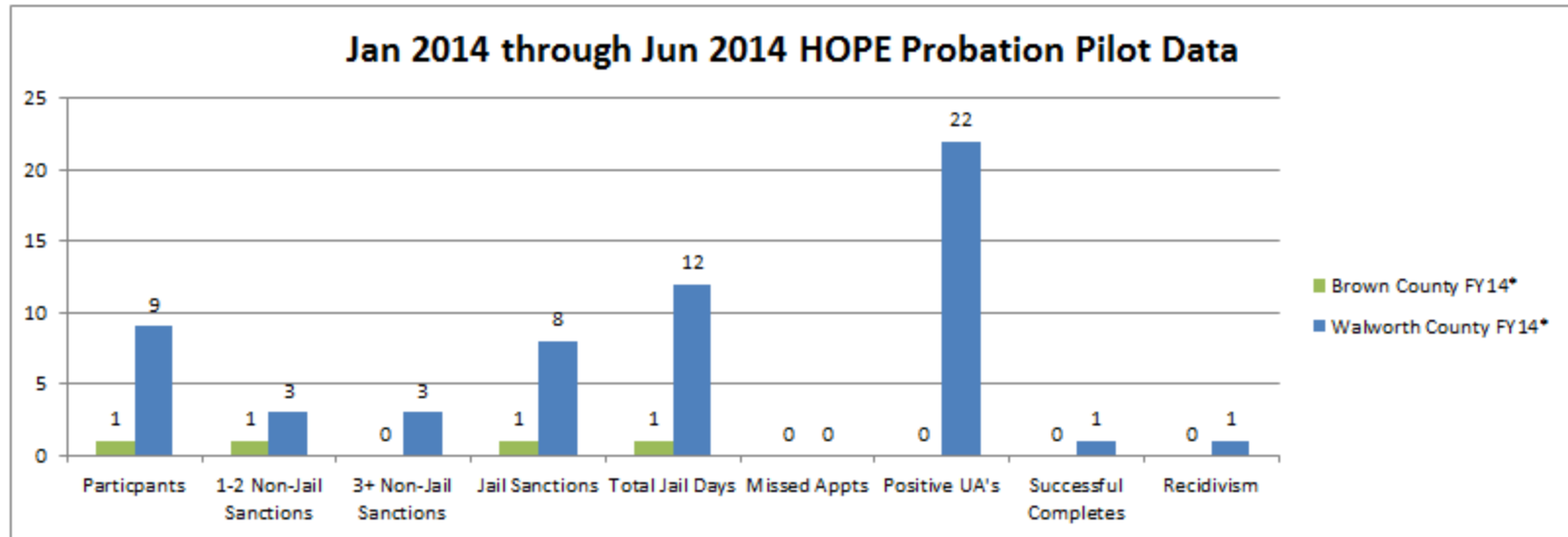
PSIA Goal: Focus supervision on high-risk offenders and provide specialized programs and services to improve outcomes.

* 2015 data is pending and will be updated periodically.

Program Description: The PSIA created a presumptive probation sentence for nonviolent class 5 and class 6 felonies. Courts may overcome the presumption by finding aggravating circumstances and making a written record. The "departure rate", the rate of instances where a judge imposes a sentence despite the presumption, was projected to be 20%.

Probation - HOPE Pilot

Location and Date Range(FY)	Participants	1-2 Non-Jail Sanctions	3+ Non-Jail Sanctions	Jail Sanctions	Total Jail Days	Missed Appts	Positive UA's	Successful Completes	Recidivism
Brown County FY14*	1	1	0	1	1	0	0	0	0
Walworth County FY14*	9	3	3	8	12	0	22	1	1
Brown County FY15*	10	5	2	7	12	0	21	1	0
Walworth County FY15*	14	6	4	12	14	2	13	8	0



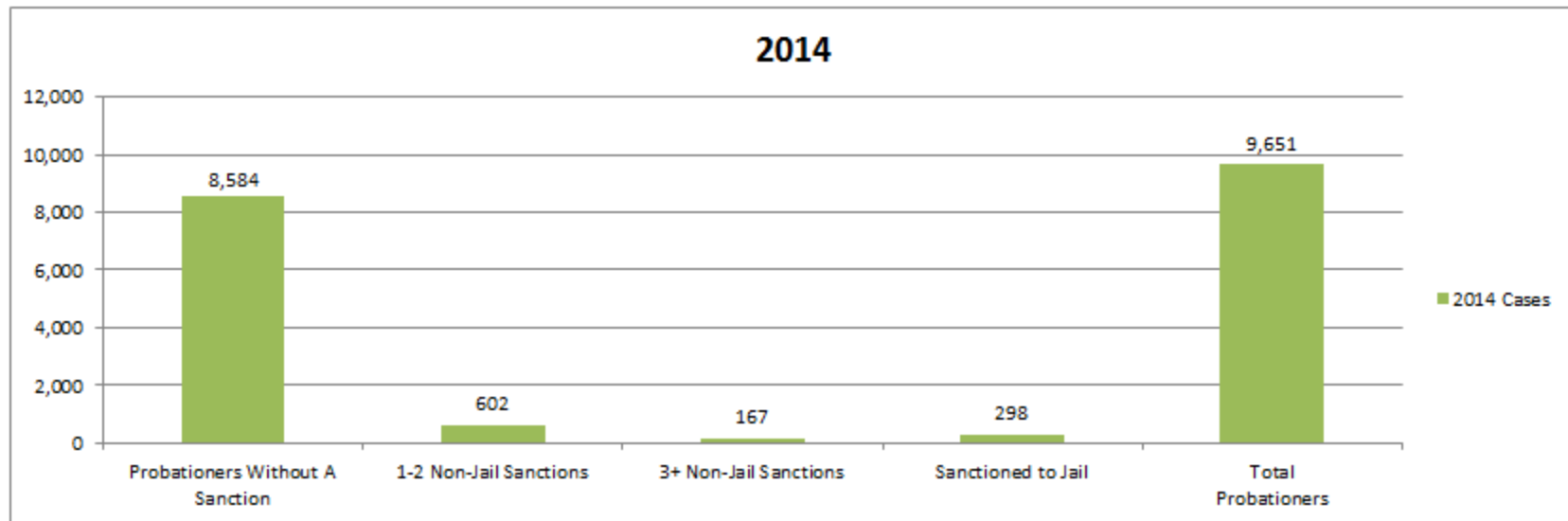
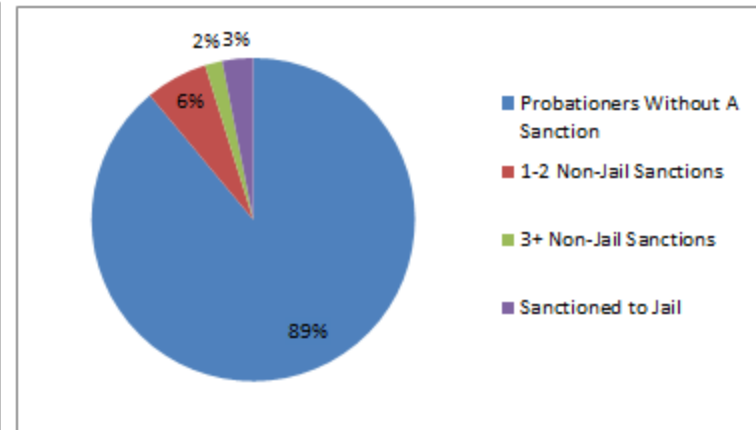
PSIA Goal: Specialized supervision programs and services to improve outcomes for high-risk offenders.

* 2014 data is taken from January 2014 through June 2014.

* 2015 data is taken from start of FY to April 2015.

Probation Sanctions

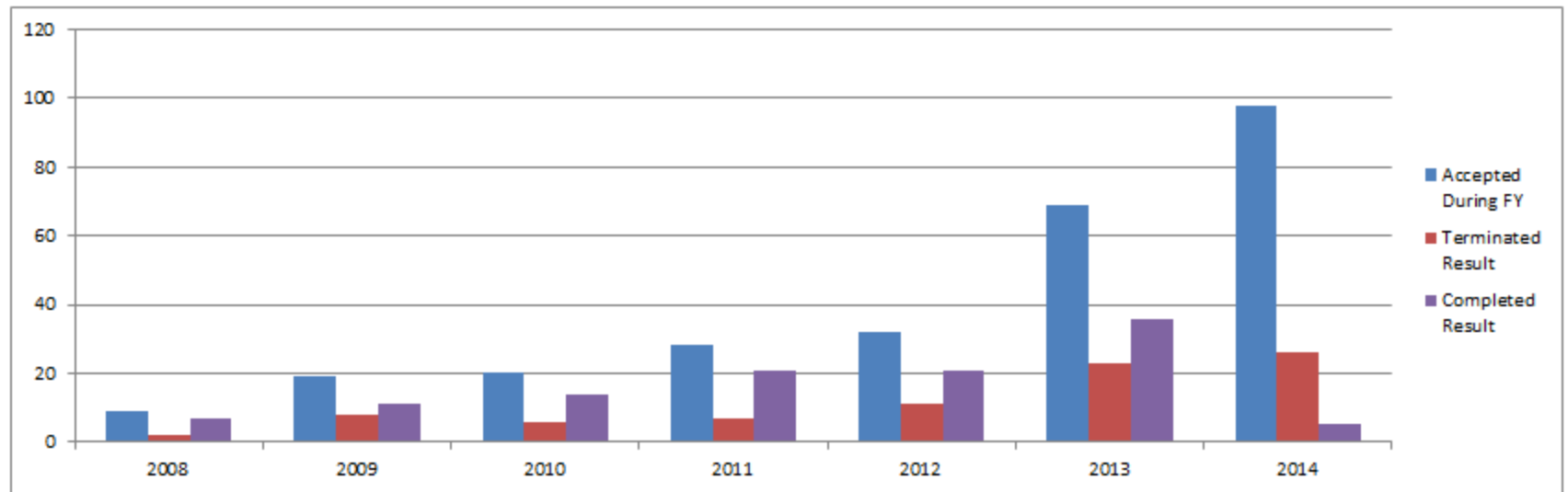
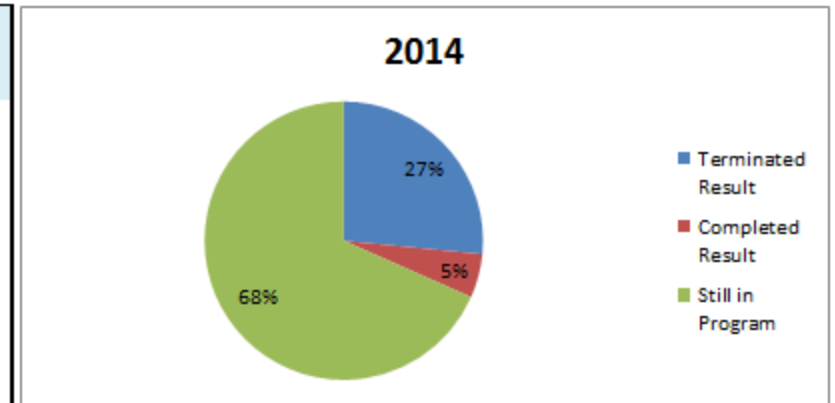
Date Range(FY)	Probationers Without A Sanction	1-2 Non-Jail Sanctions	3+ Non-Jail Sanctions	Sanctioned to Jail	Total Probationers
2014	8,584	602	167	298	9,651
2015 To Date	8,610	1,056	414	569	10,649



PSIA Goal: Focus supervision on high-risk offenders and provide specialized programs and services to improve outcomes.
 Probationers/parolees may have more than one case associated.

Probation - Drug/DUI Courts

Date Range(FY)	Accepted During FY	Terminated Result	Completed Result	Still in Program	Completion Percentage	Statewide Capacity
2008	9	2	7	0	77.78%	
2009	19	8	11	0	57.89%	
2010	20	6	14	0	70.00%	
2011	28	7	21	0	75.00%	45
2012	32	11	21	0	65.63%	90
2013	69	23	36	10	52.17%	120
2014	98	26	5	67	5.10%	180
FY '15 To Date	118	9	0	109	0.00%	245



PSIA Goal: Focus supervision on high-risk offenders and provide specialized programs and services to improve outcomes.
PSIA Goal: Increase drug court capacity to 245 in FY15. This goal has been met.

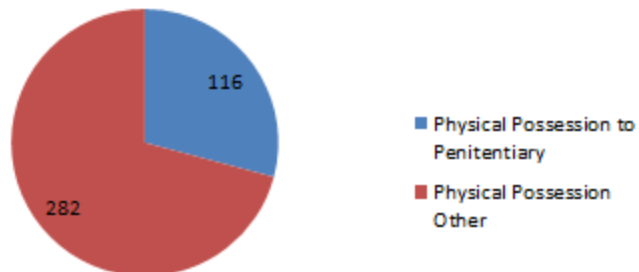
Ingestion Law

Date Range(FY)	Physical Possession Convictions	Physical Possession to Penitentiary	Physical Possession Other	Ingestion Convictions	Ingestion to Penitentiary	Ingestion Other
2014	398	116	282	298	78	220

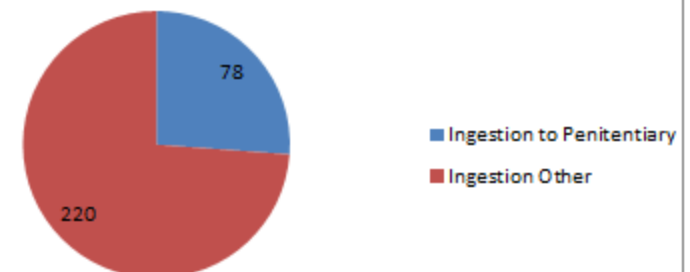
The Criminal Justice Initiative Workgroup found that “the most common reason for an offender being in prison in South Dakota is drug possession. The vast majority of inmates serving time for controlled substance crimes were convicted of possession offenses rather than manufacturing or distribution/delivery offenses.”

South Dakota’s statutory framework treated physical possession of a controlled drug or substance the same as ingestion of a controlled drug or substance. As a result, the Public Safety Improvement Act amended current law to differentiate between physical possession of a controlled drug or substance and unauthorized ingestion of a controlled drug or substance into the body.

Physical Possession

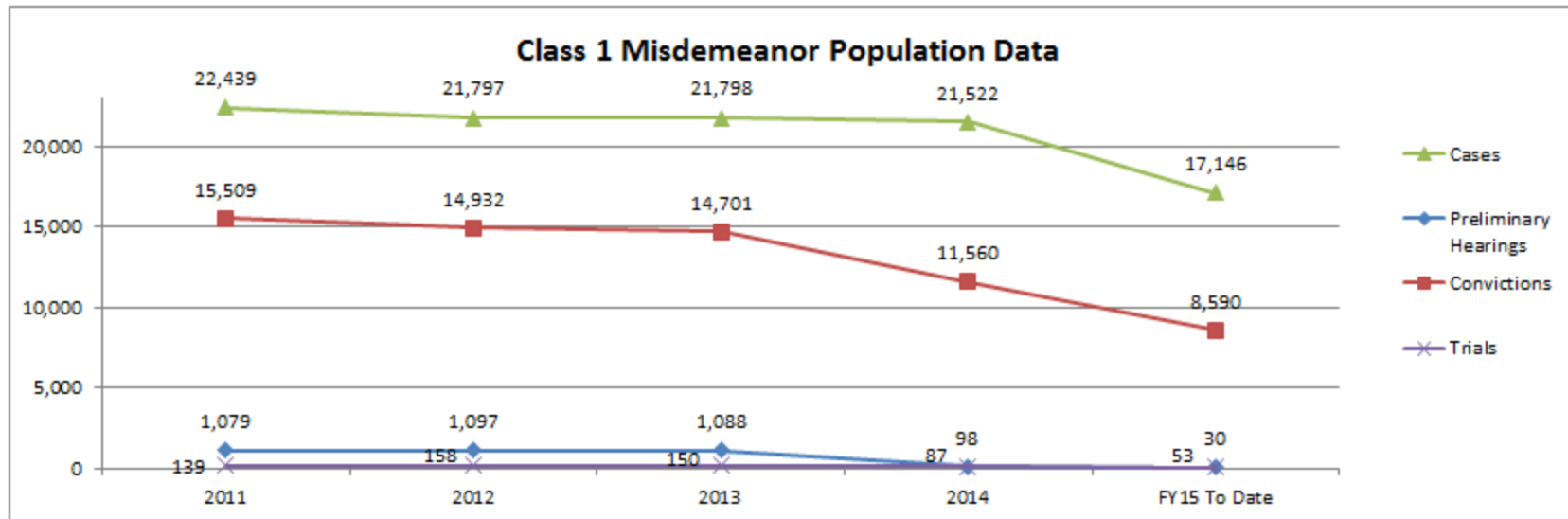
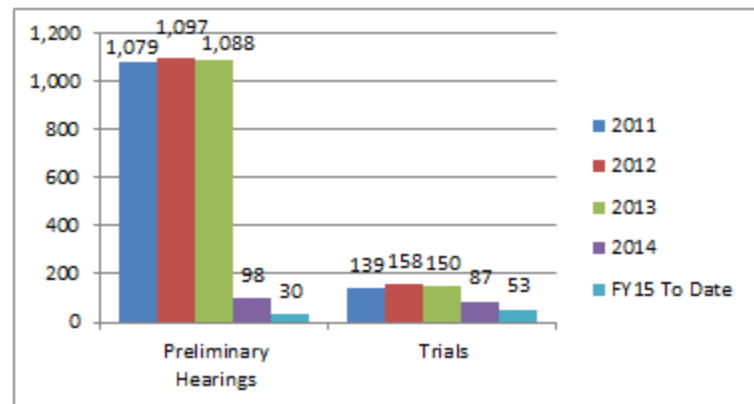


Ingestion



Preliminary Hearings

Date Range(FY)	Class 1 Misdemeanor Population			
	Cases	Preliminary Hearings	Convictions	Trials
2011	22,439	1,079	15,509	139
2012	21,797	1,097	14,932	158
2013	21,798	1,088	14,701	150
2014	21,522	98	11,560	87
FY15 To Date	17,146	30	8,590	53



PSIA Goal: Conserve judicial partner resources to focus time and resources on high-risk offenders.

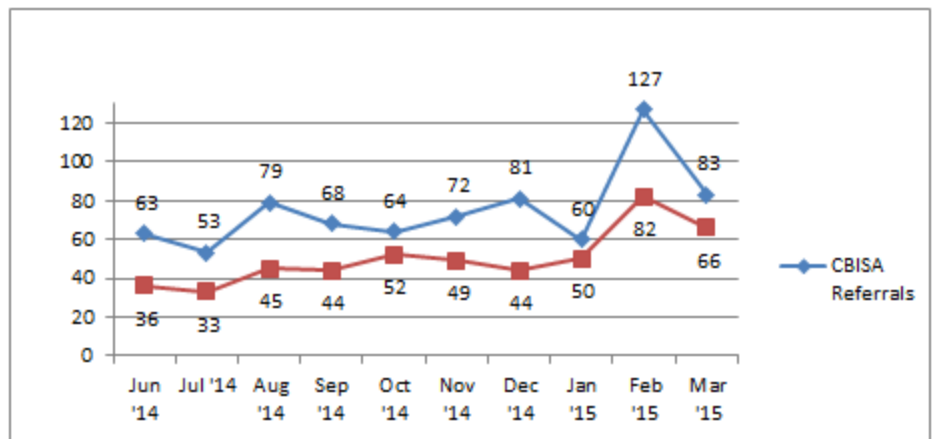
These graphics are shown with case-specific numbers as opposed to probationer-specific.

Probationer-Specific/Case-Specific-This is used to state whether these statistics are based on a count of probationers or individual cases.

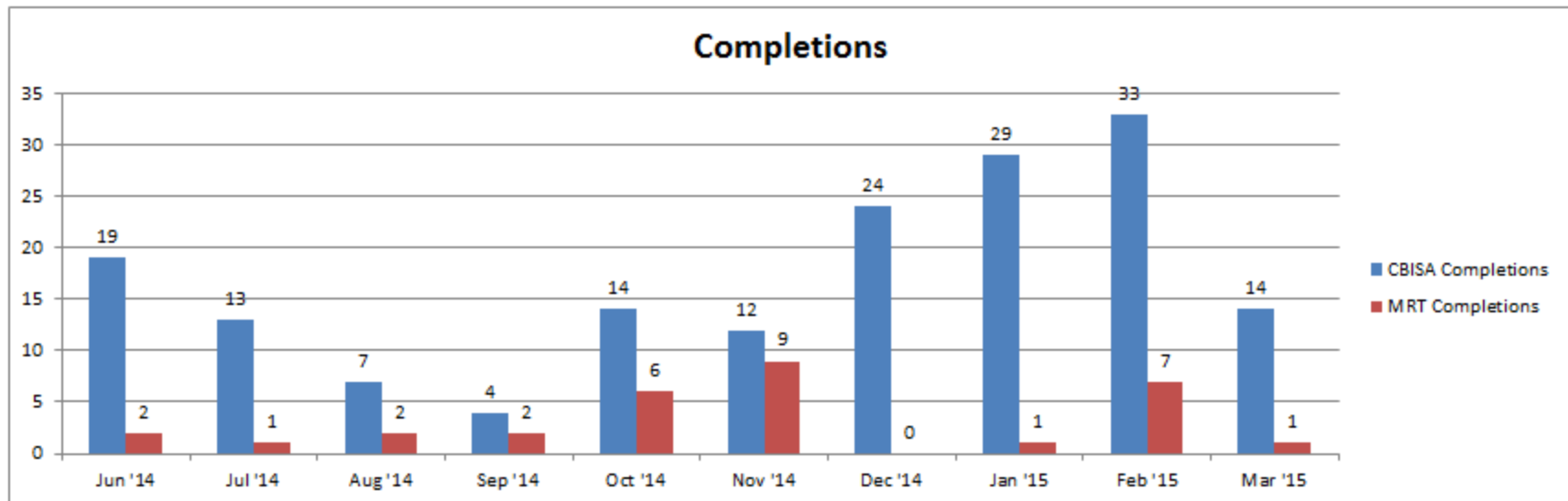
Probationers/parolees may have more than one case associated.

Substance Abuse

Date Range(FY)	CBISA Referrals	CBISA Completions	MRT Referrals	MRT Completions
Jun '14	63	19	36	2
Jul '14	53	13	33	1
Aug '14	79	7	45	2
Sep '14	68	4	44	2
Oct '14	64	14	52	6
Nov '14	72	12	49	9
Dec '14	81	24	44	0
Jan '15	60	29	50	1
Feb '15	127	33	82	7
Mar '15	83	14	66	1



Completions



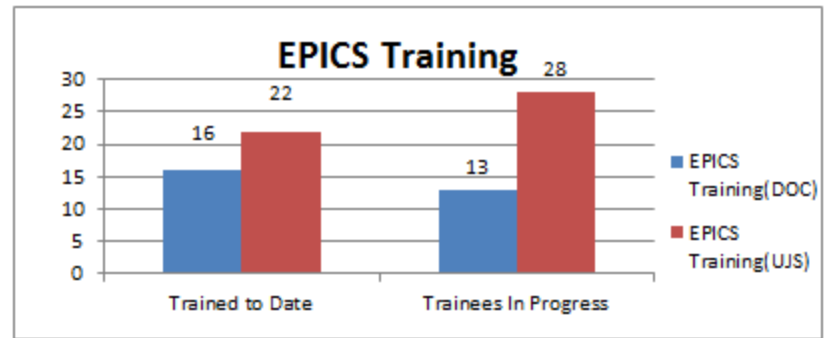
CBISA - Cognitive Behavioral Interventions for Substance Abuse (CBISA) is a cognitive behavioral substance abuse treatment program used to teach clients skills and strategies for avoiding substance abuse. CBISA is targeted for the criminal justice involved client. Average treatment length is 3-4 months.

MRT - Moral Reconciliation Therapy (MRT) is a cognitive behavioral program that combines education, group and individual counseling, and structured exercises designed to increase moral reasoning by addressing negative thoughts and behavior patterns. MRT is targeted for the criminal justice involved client. Average treatment length is 6 months.

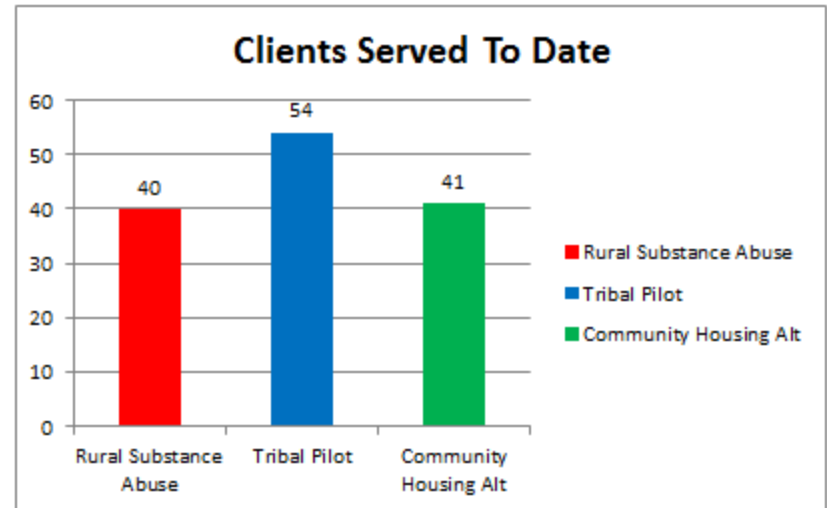
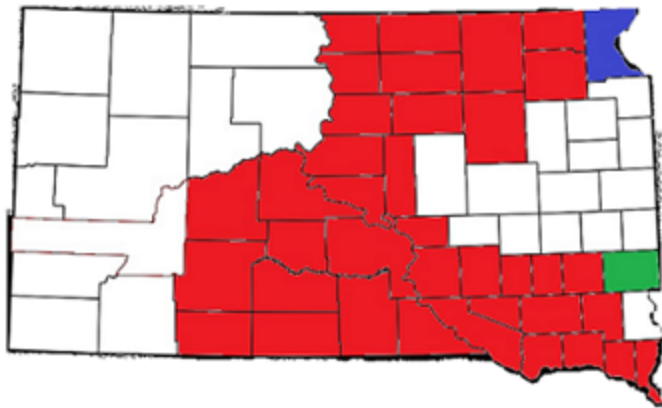
Other Programs

Program	Clients to Date
Rural Substance Abuse	40
Tribal Pilot	54
Community Housing Alt	41

Program	Trained to Date	Trainees In Progress	Percentage Trained
EPICS Training(DOC)	16	13	33%
EPICS Training(UJS)	22	28	39%



Location of Program Usage



Tribal Pilot - The SD Department of Corrections and the Sisseton Wahpeton Oyate work together to ensure parolees in the Sisseton area are successful while on parole. The Tribal Pilot consists of identifying the target population, programming needs, appropriate/consistent/cultural responses to behaviors, and use of external monitoring controls such as 24/7.

Community Housing Alt - One of the components of the criminal justice initiative was the allocation of money to improve transitional housing options for released offenders by developing a pilot housing program as an alternative to the Community Transition Program (CTP). The focus of the Community Housing Alternative is to address the housing barriers that offenders may have, by promotion of a pro-social environment. The SD DOC contracts with the St. Francis House to provide these services.

EPICS Training - Effective Practices in Community Supervision (EPICS) teaches officers how to target higher risk offenders and their criminogenic needs using cognitive-behavioral interventions and core correctional practices. The funds associated with SB 70 included Train-the-Trainers in EPICS for UJS and DOC. The train-the-trainers for DOC and UJS has been completed. Both agencies are now in the process of training their remaining agents on EPICS.

Veterans Data

Date Range(FY)	Veterans Identified	Veterans On Probation During	Veterans on Parole During	Veterans in Pen During	Court Capacity
2014	1,775	386			15
2015	1,566	464	204	266	20

The PSIA requires a sentencing court before accepting a guilty plea for any class 1 misdemeanor or felony to inquire whether the defendant is currently serving in, or is a veteran of, the United States Armed Forces. If the defendant is currently serving in the military or is a military veteran, the court may then order that court services consult with the Department of Veterans Affairs or another agency or person with suitable knowledge or experience, for the purpose of providing the court with information regarding treatment options available to the defendant, including federal, state, and local programming. The court shall then consider those treatment options when imposing sentence.

